



# CONTACT

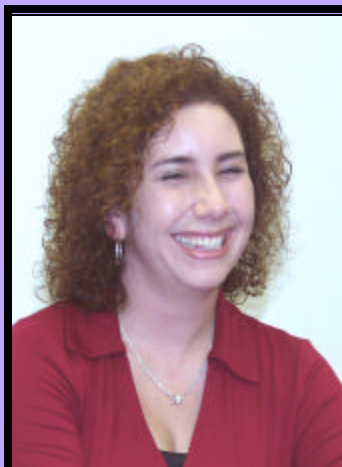
Montebello Teachers Association/California Teachers Association/National Education Association • 918 W Whittier Blvd Montebello 90640 • (323) 722-5005 • montebelloteachers.org

## Andy Shinn Named Bargaining Chairperson

Andy Shinn (BGI) was named the Bargaining Chairperson at Council Tuesday, December 9. Andy served on the past Bargaining Team. The full contract was ratified last spring. Re-openers begin spring 2009 for the current contract. According to the current agreement Wages will be opened. In addition the District and the Association may open one article.

Andy's next job is to recommend members of the bargaining team.

The contracts themselves have gone to print and should be ready for distribution by March. The current contract is available on line at [montebelloteachers.org](http://montebelloteachers.org).



Elizabeth Gasca (RPS) was named a trustee to the Montebello Teachers Association Retiree Supplemental Health Plan (better known as the TRUST.) The Trust provides health insurance benefits for eligible retirees. At this time approximately 550 retirees participate in the Trust.

### NEA RA Will Be in San Diego this Summer

The National Education Association (NEA) Representative Assembly (RA) will be in San Diego **June 30 through July 7.**

The State Declaration of Candidacy is in the December issue of the California Educator ( **Due to CTA Friday, January 30.** )

The local Declarations of Candidacy is on the reverse side of this *Contact* and available at the MTA office. ( **Due to the MTA office Friday, February 24.** )

All members of the Association are eligible to submit Declarations.

**Note:** Both the Local and State Declaration forms are available at [montebelloteachers.org](http://montebelloteachers.org).

## 2008 Tax Information

Also available at [montebelloteachers.org](http://montebelloteachers.org)

The amounts shown below are the annual amount for the calendar year 2008, which covers parts of two different membership years. Please note that your Trust Fund contribution is included since it is collected as "dues" under Category 1. Trust Fund contributions are also included with dues if you are a Category 2 employee and have elected to participate in the MTA Trust Fund.

### JANUARY – DECEMBER 2008 MEMBERS

Cat. 1	Full Time	\$1,957.20 (Rep Fee \$957.20)
2	30-60%	\$1,484.60 (w/o TF \$484.60)
3	30% or less	\$ 248.44

Retired 6/08                      \$1,178.40(Rep Fee \$578.40)

### NEW MEMBERS SEPTEMBER – DECEMBER

Cat. 1	Full Time	\$ 778.80 (Rep Fee \$378.80)
2	30-60%	\$ 595.40 (w/o TF \$195.40)
3	30% or less	\$ 103.84

Political contributions are as follows: MTA-ABC \$25/year. FACT \$10/year, NEA-PAC \$10/year (or what you have designated).